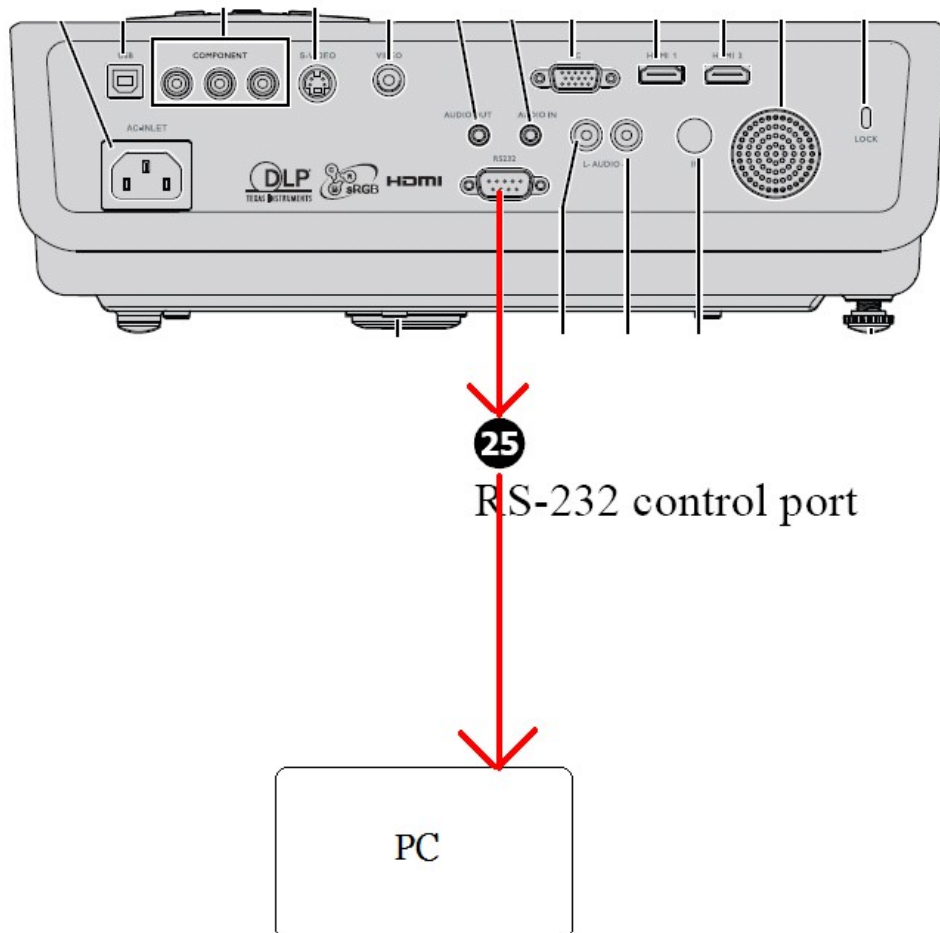


### <How To Download PW392 By Way Of RS232:>

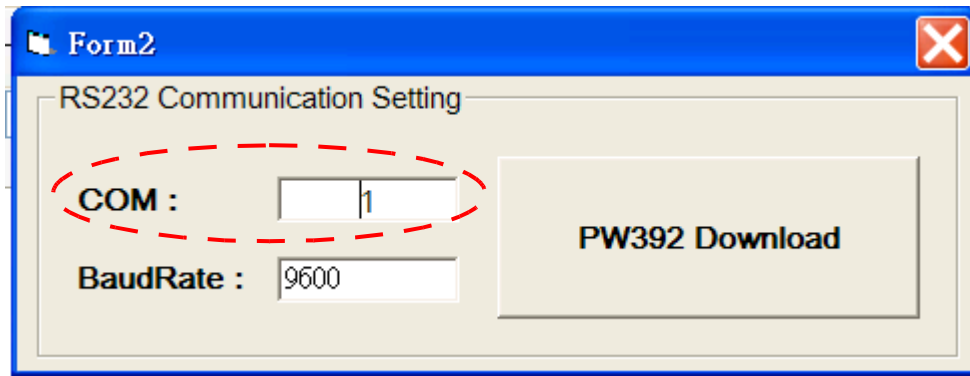
(1. Connect to PC **RS232** port to projector like below picture:



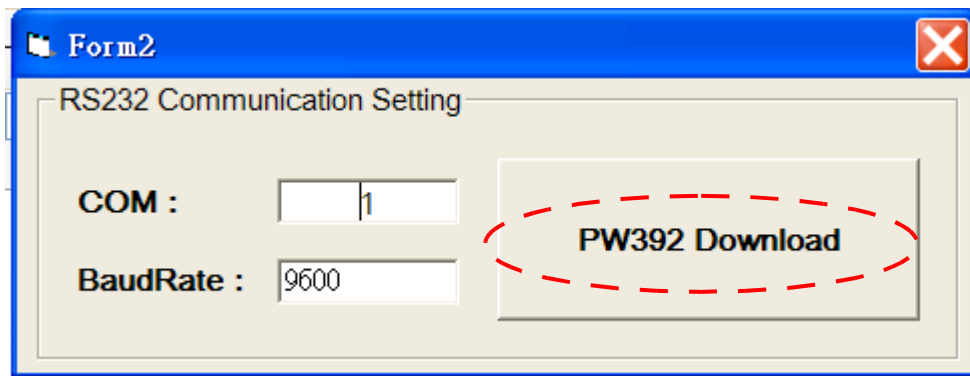
(2. Run “20090914\_PW392 Downloader\_V1.5.exe”

and input correct “COM:” port number, e.g.: 1 ~ 5

PS: You don’t need to input the Baud Rate setting, SW will automatically switch different of baud rate (9600, 19200, 38400, 57600, 115200) to link with projector



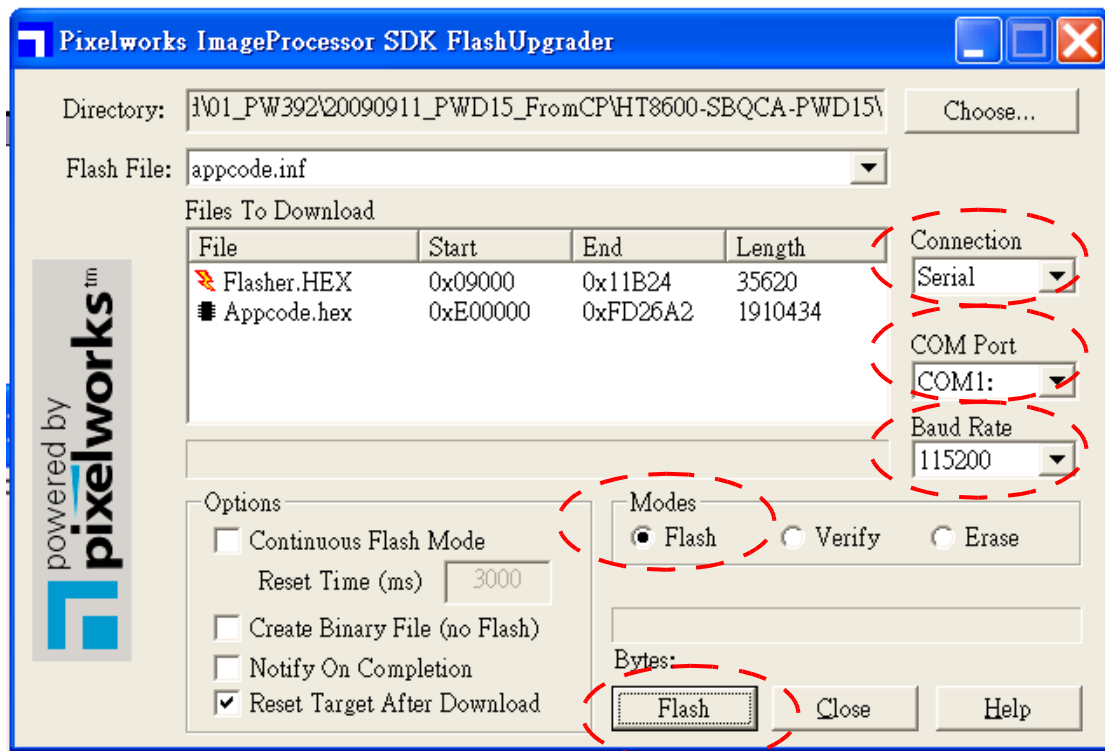
(3. Select the “PW392 Download” button



PS: If you see below warning message of “No Action”, it means that the projector got something wrong or the RS232 cable did not get well connection



- (4. Then you can see a pop-up Pixelworks FlashUpgrader tool as below:  
Please input some of correct info before download then select “Flash”



(5. Power on projector then you can see PW392 is downloading as below:

